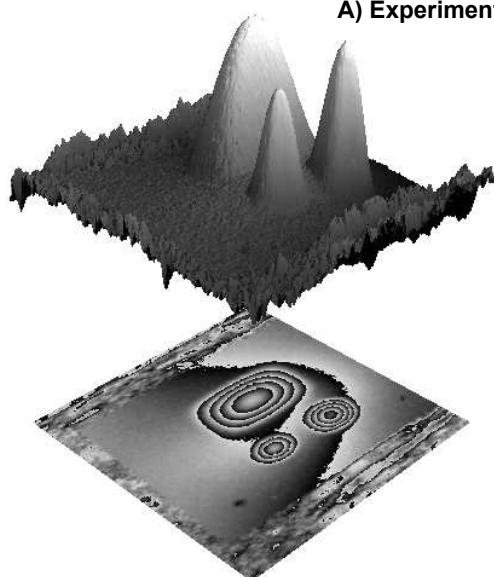
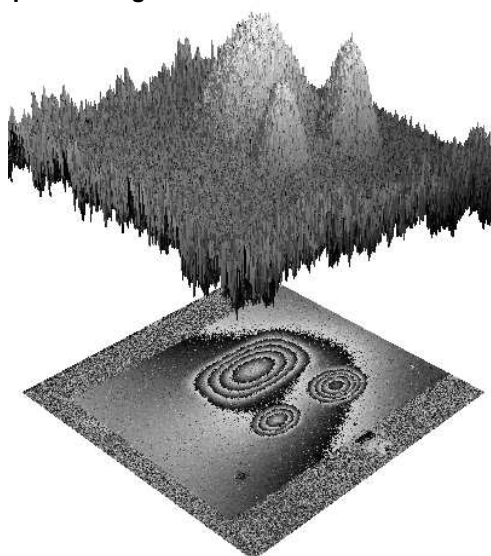


**A) Experimental phase image**



**B) Proposed method**



**C) Flynn's method**

Fig. 5. Test using an experimentally obtained phase map. The phase map dimensions are  $512 \times 512$ . A) shows the experimental phase map image, B) the unwrapped phase surface obtained with our dynamic phase unwrapping system, and C) with the Flynn's method.