



06

**Systemic banks, capital composition
and CoCo bonds issuance:
The effects on bank risk**

Victor Echevarria-Icazaa
Simón Sosvilla-Rivero
WP06/17

WorkingPapers

Abstract

This paper shows that systemic banks are prone to increase their regulatory capital ratio through a decline in risk-weighted assets density and an intense use of lower level capital. The market access of systemic banks, and the fact that they were singled out for higher capital requirements seem to have biased them towards lower level capital, consistent with the theory that asymmetric information drives capital decisions. These effects are particularly strong for institutions that had a rather low level of capitalization at the start of the period and for those that exhibited a strong use of Additional Tier I capital before the regulatory changes. Strict capital composition requirements for firms with lower buffers would be an improvement.

JEL Classification: G12, G21, G28.

Keywords: Contingent capital, banking regulation, risk-taking incentives, asset substitution, systemic risk

Instituto Complutense de Estudios Internacionales, Universidad Complutense de Madrid. Campus de Somosaguas, Finca Mas Ferré. 28223, Pozuelo de Alarcón, Madrid, Spain.

© Victor Echevarria-Icaza and Simón Sosvilla-Rivero

Victor Echevarria-Icaza, Complutense institute for international Studies, Universidad Complutense de Madrid. 28223 Madrid, Spain Corresponding author. Tel.: +34 913 942 342; fax: +34 913 942 591, victoreicaza@yahoo.com

Simón Sosvilla-Rivero, Complutense institute for international Studies, Universidad Complutense de Madrid. 28223 Madrid, Spain sosvilla@ccee.ucm.es

ISSN: 2530-0849

Acknowledgements: The authors thank Vicente Salas, Massimiliano Caporin and participants at II Workshop on “Macroeconomics, Money and Finance” (Universidad Complutense de Madrid, February 2017) for helpful comments and suggestions. Simon Sosvilla-Rivero thanks the hospitality provided by the Department of Economics during a research visit at the University of Bath. Responsibility for any remaining errors rests with the authors.

Funding: This work was supported by the Banco de España through [grant from Programa de Ayudas a la Investigación 2016–2017 en Macroeconomía, Economía Monetaria, Financiera y Bancaria e Historia Económica]; the Spanish Ministry of Education, Culture and Sport [grant PRX16/00261]; and the Spanish Ministry of Economy and Competitiveness [grant ECO2016-76203-C2-2-P].

El ICEI no comparte necesariamente las opiniones expresadas en este trabajo, que son de exclusiva responsabilidad de sus autores.

Index

1. Introduction	5
2. The regulation	8
3. Empirical model	9
4. Data and empirical results	9
4.1. Data	9
4.2. Control group	9
4.3. Empirical results	14
5.- Concluding remarks	20
References	21
Appendix: list of GSIFI banks and control group	24

1. Introduction

This paper analyzes the effect of regulatory capital requirements for systemic banks on their capital structure. Since 2008, the regulation has tightened across all banks, with the introduction of stricter capital requirements for financial institutions. This was based on the idea that policymakers had that insufficient capital had made firms vulnerable (see, e. g., Admati and Hellwig, 2014; and Kashkari, 2016) and led to public bailouts.

One aspect of the regulation that was particularly heeded dealt with systemic banks. The failure of these banks can have adverse effects on the overall financial system and spread on to the sovereign (see, e. g., Singh *et al.*, 2016)¹. As a result, they benefit from an implicit protection by the sovereign. Regulators have pushed regulation that improves the resiliency of these financial institutions, increasing their capital requirements (Hanoun, 2010) and thus lowering the probability that they will be bailed out and the eventual size of a bailout package (Calderon and Schaeck, 2016; Duchin and Sosyura, 2014 and Giannetti and Simonov, 2013).

We examine how systemic institutions have differed from other institutions in their approach to strengthening their equity ratios. Their approach may differ for several reasons. First, capital regulation is stricter with systemic institutions, in particular through the systemic surcharge, which affects only the highest level of capital (Common Equity Tier 1, CET1) and through certain requirements, like the total loss-absorbing capacity (TLAC) that pertain to overall capital and loss absorbing liabilities. This may lead banks to diversify their sources of capital. In particular, they may want to avoid further dilution of equity holders and so increase the issuance of debt-like capital. This may stem from a willingness to reduce the pressure on their return on equity (ROE).

¹ Sovereign risk can also affect bank risk. Based on these linkages, some authors (Brunnermeier *et al.*, 2011 and Reichlin, 2014, among them) have described the development of a ‘diabolic loop’ as the major cause of the crisis in euro area countries.

Secondly, given the implicit bailout from authorities, systemic institutions have a tendency to use debt like instruments, in which they benefit from a subsidy (see Haldane and Madouros, 2012; Deangelo and Shchultz 2013; or Acharya *et al.*, 2016, among others), lowering their cost of debt relative to their cost of capital. This means that, *ceteris paribus*, systemic firms are more likely to use debt like instruments when they can choose how to boost their regulatory capital. In particular, meeting leverage ratios and TLAC requirements can lead to such an increase, but not particularly for the systemic surcharge.

We attempt to test whether systemic banks are more likely to meet their capital requirements through lower level capital than other banks. Our particular focus is on how banks have reacted to the regulatory changes implemented in recent years that have generally led to higher capital ratios. We focus on testing a possible bias to use lower level capital. This is important, as the holders of lower level capital are often other financial institutions (Avdjiev *et al.*, 2013). As a result, from a financial stability perspective, understanding who issues lower capital level, and the effects it has on its behavior is important.

We propose a difference in difference estimation, using an approach similar to that of Schepens (2016) that was first fleshed out by Rosenbaum and Rubin (1985). A flurry of new regulation has affected banks since 2009. Of particular importance have been the rules of tax deductibility of Contingent convertible capital (CoCo bonds)², approved in the UK in 2013, and used by many banks in the euro area since then. We use a modified propensity score matching methodology based on a probit model, in order to construct a robust counterfactual to the banks that made it into the systemically important financial institution (SIFI) list, which we compare with banks that behaved similarly as determined by the probit model. We also use those banks that had similar government support when the first list of global systemically important banks (GSIFIs)

² For an excellent primer on the CoCos, see Avdjiev *et al.* (2013).

was announced. This way we obtain a homogeneous sample. From there, we test how systemic banks adapted their capital ratios after their inclusion on the SIFI list and, secondly, to the other regulatory practices, like the change in the tax treatment of CoCo bonds.

The GSIFI list and the increase in regulatory capital requirements provide the grounds for an experiment to understand how banks react to such shocks. In particular, the fact that certain institutions characterized by their size, complexity and interconnectedness were asked to do more can shed some light on the incentives to use lower level capital and the effect on bank risk taking of these changes.

If being systemic, and in particular, being added to the list of GSIFIs confers, first, tougher capital requirements, and second, a certain advantage in issuing debt like instruments, banks will have an incentive to search for lower level capital. If these incentives are strong enough, banks may, as a result, end up being weaker than originally thought, just because they now have to face the effects of lower level capital.

Understanding the determinants of the structure of capital is all the more important given the relevance of the issue for financial stability. Most CoCo bonds are held by other banks. Given their asymmetric risk profile, understanding what leads institutions to issue them will shed light on one of the factors of instability for the financial system. Such is the purpose of our empirical model.

The first main finding of this paper is that accounting-based equity ratios at systemic banks have not behaved very differently from overall banks. In fact, the regulation has led them to become lower. However, systemic banks have improved their regulatory ratios through three methods. First, by a reduction in the density of risk weighted assets, which has been particularly intense at systemic banks.

Secondly, our results suggest a high propensity to use lower level capital, and in particular CoCo bonds, which increased when the market was liberalized after 2013 a tax change in Brit-

ish law made these more attractive. We find that CoCo bonds issuance has been particularly intensive at systemic banks. This pattern can be extended to all lower level capital, such as Tier 2 (T2) capital, which increases at systemic institutions since after 2011, specially at firms that had less capital at the beginning of the period. This would be consistent with pecking order theory of Myers (1984), based on the argument in Myers and Majluf (1984) that asymmetric information problems drive the capital structure of firms.

Third, we show that various risk measures suggest that bank risk increased after the regulation was passed, even though the intensity of risk-weighted assets (RWA) decreased. This is particularly true for banks that were relatively low capitalized in 2011. These banks showed, *ceteris paribus*, a higher propensity to capitalize through lower level capital. This finding would suggest that one of the unintended consequences of the push to increase capital ratios may have been a deterioration of the composition of capital and riskier banks than was intended.

To the best of our knowledge, it is the first paper to study empirically how the regulation affected the decisions of systemic institutions and that looks at the composition of their capital. We contribute to several strands of the literature. First, our finding suggests that systemic banks exploited the leeway in capital requirements to use more debt-like instruments, in line with the theory that asymmetry of information and ROE targeting guide bank capital decisions. Both of these theories suggest that banks increase the risk of the portfolio, particularly if their starting level of capital is low, which is consistent with our results.

This paper contributes to the literature on how banks choose their equity ratio and how they respond to the different incentives found in the regulation. The optimal capital structure has been empirically studied by Marcus (1984), Flannery and Rangan (2008), Greenlaw *et al.* (2008), Brunnermeier and Pedersen (2009), Gropp-Heider (2010), and Schaeck *et al.* (2011), among others. The importance

of the issue stems from the role of the capital structure in determining bank performance, in particular in crisis times (Berger and Bouwman, 2013; and Berger *et al.* 2016).

De Jonghe and Öztekin (2015) and Schepens (2016) argue that the way banks adjust their capital ratios depends on both the regulatory environment and the macroeconomic conditions. Our framework also allows for sluggish capital adjustment, in line with their results.

Acharya *et al.* (2016) finds that systemic banks benefit from a subsidy, although he finds that as different bank bailouts were implemented, market discipline became laxer for all banks. That large banks are more prone to leverage is a well-established finding in the literature (see, e. g., De Jonghe and Öztekin, 2015; and Schepens, 2016).

Systemic banks are prone to high leverage (see, e. g., Haldane, 2013; and International Monetary Fund, 2009), and certain debt instruments like CoCo bonds are almost exclusively used by these banks. This can be related to the advantages conferred by the size of the banks, which allows them more market access. Given the literature finds that CoCo bonds are priced as debt and do not dilute original shareholders (Berg and Kaserer, 2015), one can expect systemic banks to use CoCo bonds heavily.

However, what is surprising is that few papers have studied how banks determine the composition of capital, although one exception is Demirguc-Kunt *et al.* (2013). This is all the more relevant as a growing body of literature is showing that the composition of capital matters.

While CoCo bonds were generally seen as a good idea that would reduce the pro-cyclicality of capital regulation (see Flannery, 2010; Calomiris and Herring, 2011; and Coffee, 2011, among others), they have difficulties. Chan and Wjinbergen (2016) have shown that CoCo bonds, which were designed to avoid having firms raise capital in times of stress (see Flannery, 2010), can actually have adverse consequences on bank health and induce negative

incentives. Stockholders may ask for a larger net present value (NPV) to accept projects when close to the trigger point: if they feel they will have to share the returns with new equity holders, they will increase the required return of projects so as to make up for the dilution of capital. This lowers bank incentives to lend in difficult times.

Secondly, equity holders at banks will be willing to accept greater asset volatility, as they know that any losses will be carried on at least partially by the holders of CoCo bonds. As a result, banks that issue many CoCo bonds will be riskier.

As Chan and Wjinbergen (2016) and Berg and Kaserer (2015) show, this depends crucially on the contractual design of the CoCo. Worryingly, they find that the contractual design of most CoCo bonds does generate perverse incentives. That the systemic capital requirements led to more intense use of CoCo bonds is, therefore, a point of concern.

Our results are consistent with different channels through which capital can affect risk taking. Horvath *et al.* (2014) point out that higher leverage induces higher risk taking through moral hazard and asymmetric information. In his view this is due to the fact that debt holders have less ability to monitor managers than equity holders. In his model, there are signs that banks tamper with RWA density. Stricter requirements lower RWA density but other risk measures suggest that they do not change the risk profile of the bank. This is line with our finding that while stricter requirements led to lower RWA density, they did not lead to lower risk at these banks.

Laeven and Levine (2009) suggest stricter regulations can lead to higher bank risk depending on bank characteristics. This finding is consistent with the different reaction to a rise in capital requirements for banks. Banks that, ex ante had less capital are likely to remain less capitalized than peers after the regulation of stricter requirements is passed.

We also provide evidence that supports the

finding by Louri and Pagratis (2014) that banks target a certain level of ROE (see also Haldane, 2013). In such a context, banks tend to overshadow the effect of higher requirements in making banks safer and the buffers available, and react increasing the risk of the portfolio in an effort to maintain their ROE. This would suggest that banks react to higher capital requirements trying to minimize the dilution of existing stockholders.

The rest of the paper is organized as follows. Section 2 reviews recent regulatory initiatives that pertain to systemic banks' capital ratio. Section 3 introduces our empirical model. The data and empirical results are reported in Section 4. Finally, Section 5 offers some concluding remarks.

2. The regulation

The new capital regulation forces banks to increase their capital ratios. Since the financial crisis, several initiatives have led to these higher capital requirements. The various initiatives are designed to tackle different aspects of bank regulation.

The systemic surcharge specifies that banks must increase the CET1 capital ratio. The magnitude of the increase can be up to 2 percentage points. The list of systemic banks affected by the regulation is published yearly since 2011. Banks are affected gradually by this, and need to increase their CET1 ratio by 2019.

Other initiatives that do not differentiate amongst levels of capital but rather set an overall requirement is the TLAC. The TLAC sets an overall level of loss absorbing liabilities that the GSIFs must hold. These liabilities include capital and long term unsecured debt. The level of these instruments is based on risk-weighted assets and the range is 16% to 20%.

The leverage ratio, binding for all institutions, also does not differentiate across capital quality. Finally, there are requirements in terms of the ratio that each of the capital tranches must meet. As a result, banks have in general, and

particularly for systemic institutions, to increase their capital ratios substantially since the post crisis period. However, they have leeway in terms of the pace and the quality of the capital they will increase.

Some banks have increased their capital ratios through the use of AT1 capital. This capital bucket is composed mainly of contingent convertible capital, which counts toward the Tier 1 (T1) capital. This is debt issued by banks, which can be converted into capital at a pre specified conversion ratio once a trigger, generally set at a solvency ratio. In order to be considered AT1, the solvency ratio must be above a certain threshold.

CoCo bonds have also shown to be subject to substantial regulatory uncertainty, which explains some the volatility in their prices. This uncertainty pertains both to coupon payments and to their placement in the capital structure once resolution is implemented. The first was related to the uncertainty regarding whether CoCo coupon payments would be subject to maximum distributable amount (MDA) requirements, which would have rendered more difficult the payment of coupons of firms in difficulty.

A second source of uncertainty stems from the difficulty for investors to estimate how close banks are to the trigger point. In particular, given that the trigger point is usually a level of T1 capital, and that firms are not forced to make their levels of Pillar 2 capital required public, it is theoretically difficult for holders of CoCo bonds to estimate how close they are to triggering MDA restrictions

Part of this was solved when the requirements for the MDA were clarified (Chance, 2016). However, an essential element of uncertainty stems from the fact that banks are not forced to disclose their Pillar 2 capital. As a result, a coco holder can have trouble understanding how far it is from the trigger point. This makes pricing of CoCo bonds difficult, and so prone to volatility.

Large banks have been the largest issuers

of hybrid instruments in general. This is explained by both the need for a certain size of the issuer that can mitigate some of the risks that arise from the hybrids and, secondly, the fact that systemic banks had a larger regulatory pressure to strengthen their capital ratios.

3. Empirical model

We run a regression of the form shown below using the generalized method-of-moments (GMM) estimator proposed by Blundell and Bond (1998). The basic regression model is the following:

$$ETA_{i,t} = \alpha + \beta_1 Treated_{i,t} + \beta_2 Post_t + \beta_3 Treated_{i,t} * Post_t + \beta_4 X_{i,t} + \varepsilon_{i,t} \quad (1)$$

where $ETA_{i,t}$ is the equity ratio of bank i at time t , defined as equity over total assets; $Treated_{i,t}$ is a dummy that equals one for a bank in the GSIFI list each year (treatment group indicator); $Post_t$ is a dummy indicator equal to one in the post-treatment period (2013–2015 in our main regression); and $X_{i,t}$ represents a set of explanatory variables that have been consistently seen as important bank capital structure determinants.

We will introduce variations to the left-hand side variable. In particular we will test how the different components of ETA can be affected by the new regulation. As a result, we will gain insight into how the components of ETA changed. This way we can test whether systemic banks had a bias to adjust their ETA through the different components of the ration. In particular, from the decomposition of the ETA ratio, one can see that the ratio can be adjusted through an increase of different components of equity, altering the share of the regulatory capital covered by equity (E/CR), a change in the intensity of Risk-Weighted assets (RWA/A).

$$ETA = E/RC * RC/RWA * RWA/A$$

4. Data and empirical results

4.1. Data

The data consists of 260 listed financial institutions in Europe. The sample is from 2000 to 2015. Some regulatory ratios are not available for the whole sample, which limits the samples used in some cases.

4.2. Control group

For the appropriate estimation of the difference in differences model, the selection of the control group is fundamental. The parallel path hypothesis states that the control group must be such that if there had been no policy intervention, then both groups would have evolved in the same manner.

Our control group is, ideally, those institutions perceived by the market to have the same backing as the government, but which were later not classified as systemic and so did not have to increase their capital ratios so much. We would expect these institutions to benefit from the subsidy initially, but not after the list was made public.

They can also be expected to have less pressure in increasing their capital ratios, given that they are not subject to the requirements that were specific to systemic institutions. And the fact that they were not classified as systemic means that while they may be similar to systemic institutions, when they had to raise their capital ratios, they did not have the bias towards debt issuance, as they had less pressure from equity holders.

We employ two methods to determine the control group, which yield similar results. First, as shown in Table 1, we run a probit model, where the dependent variable is a dummy that is 1 when the bank is included in the GSIFI list. The explanatory variables of this probit model are the characteristics that should define systemic banks: size (total assets), complexity (proxied by the weight of non-interest income in total income) and connectedness [calculating the conditional value at risk (CoVaR) of the firm: its contribution to the overall value at

risk (VaR) of the system]. Finally, we introduce interest income over total income as a measure of a bank’s complexity (IRINCOME). Following Schepens (2016), we take the nearest neighbor of each of the systemic institutions, selecting two institutions for each systemic one (see the table in the appendix for a list of the systemic banks and the control group).

Secondly, and as a robustness check, we use as a control group those institutions that in 2011 (when the first list of GSIFI was made public) had the highest Fitch support rating. Various tests suggest that the control group meets the parallel path hypothesis. We employ two methods to test this.

First, the residuals of the probit regression for institutions in our control group is not significantly different from 0, suggesting that by reducing the sample we are using a group that is rather similar to the systemic institutions.

Secondly, the statistics on the control group provide evidence that our selection algorithm is effective in creating a control group. The pre 2011 level of most of the variables of interest

[in particular additional Tier 1 (AT1) securities]] is not significantly different from that on the GSIFI list, even though the overall sample is (see Table 2). This is true for the main variables of interest. However, while there is a remaining significant difference in terms of size.

Yet as the box plots show, this difference is greatly reduced when we consider only our control group. Figure 1 depicts how the distribution of different variables changes according to the sample. In particular, for each variable of interest (the ETA ratio, AT1 to total assets, RWA intensity, the log of total assets, the log of Tier 2 to total assets ratio, the log of hybrids to total assets and the return on average assets (ROAA)), we present two charts. The chart on the left compares the distribution of that variable for the whole sample of banks and those in the SIFI list. The chart on the right compares the distribution of that variable for our control group and those in the SIFI list. As can be seen, there is much more overlap with the control group than with the overall sample of banks, providing further evidence that our control group renders a better counterfactual than the overall sample.

Table 1: Probit results

Dependent Variable: SYSTEMIC				
Variable	Coefficient	Std. Error	z-Statistic	Prob.
COVAR	2.3	0.35	6.53	0.05
LASSETS	1.6	0.16	9.75	0
IRINCOME	-0.4	0.07	-6.66	0
C	-32.1	3.24	-9.91	0
R ²	0.60			
Total obs	640			
Sample	2011-2015			
Method	ML			

Notes: The dependent variable is a dummy that equals 1 for each bank each year that it is included in the G-SIFI list. COVAR indicates the CoVar of each firm. LASSETS the log of total assets and IRINCOME interest income over total income.

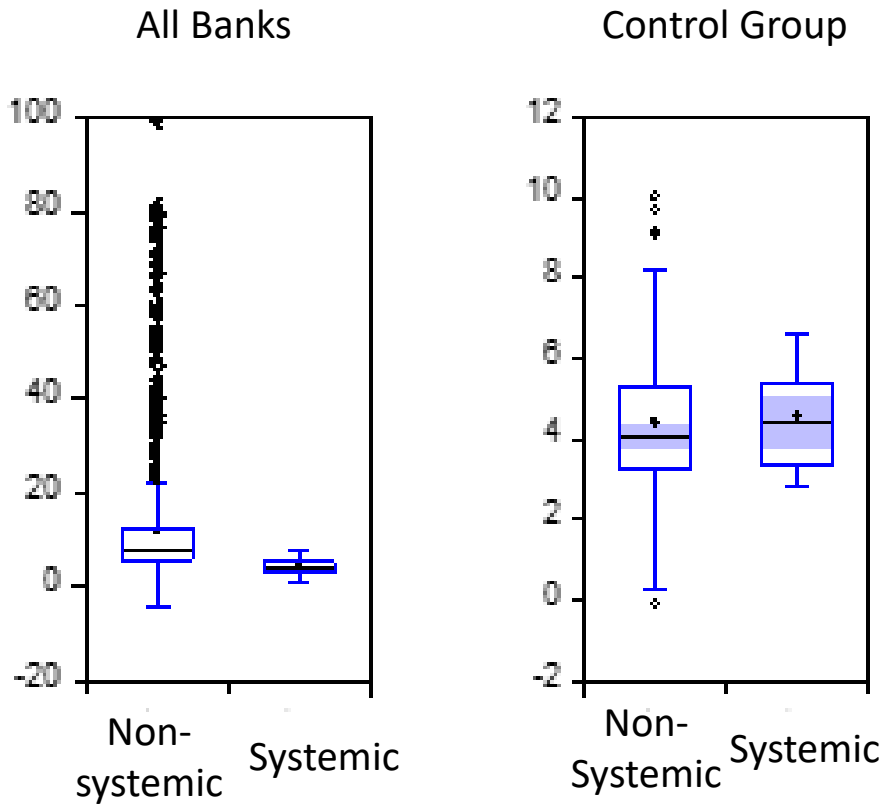
Table 2: Equality of means test for systemic institutions and non-systemic ones

	AT1	ETA	LASSETS	LT2	LHYBRID	RWAIN	ROAA
FULL SAMPLE	0	0	0	0	0	0	0.05
CONTROL GROUP	0.19	0.72	0	0	0.3	0.09	0.97

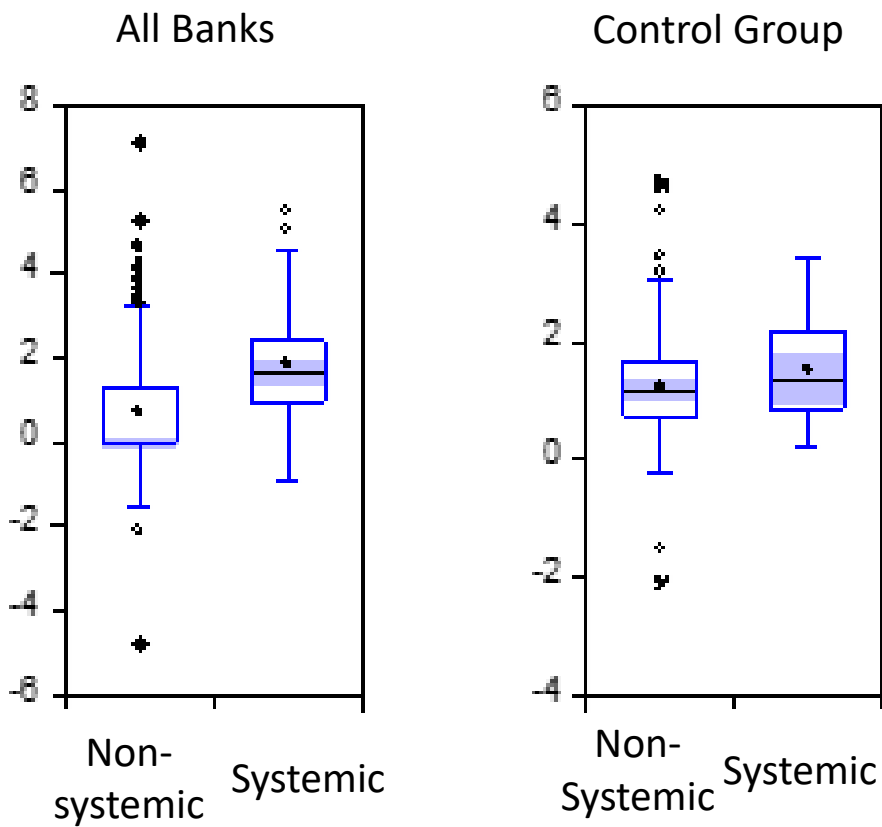
Notes: Based on pre-2011 data. The number shown is the p-value of the test.

Figure 1: Box plots (2000-2011)

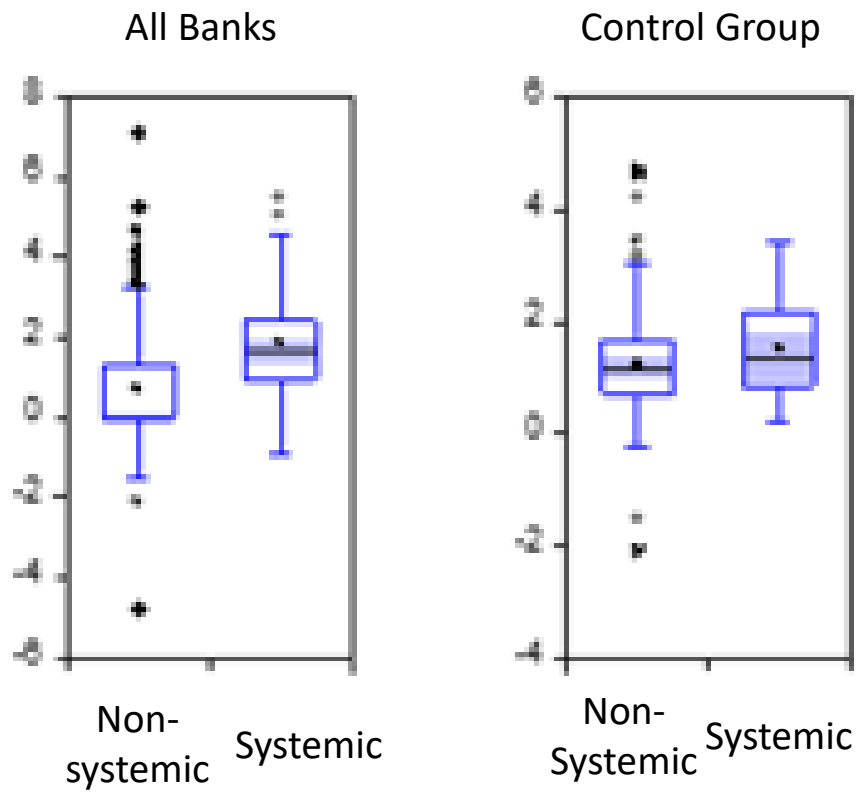
a. ETA



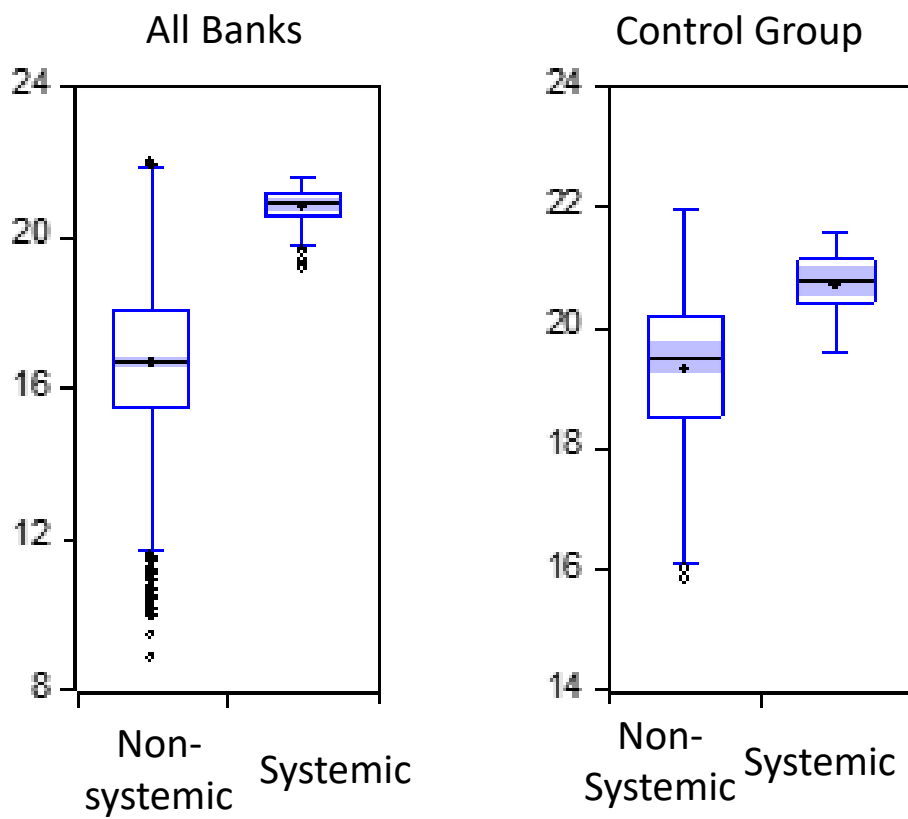
b. AT1 ratio



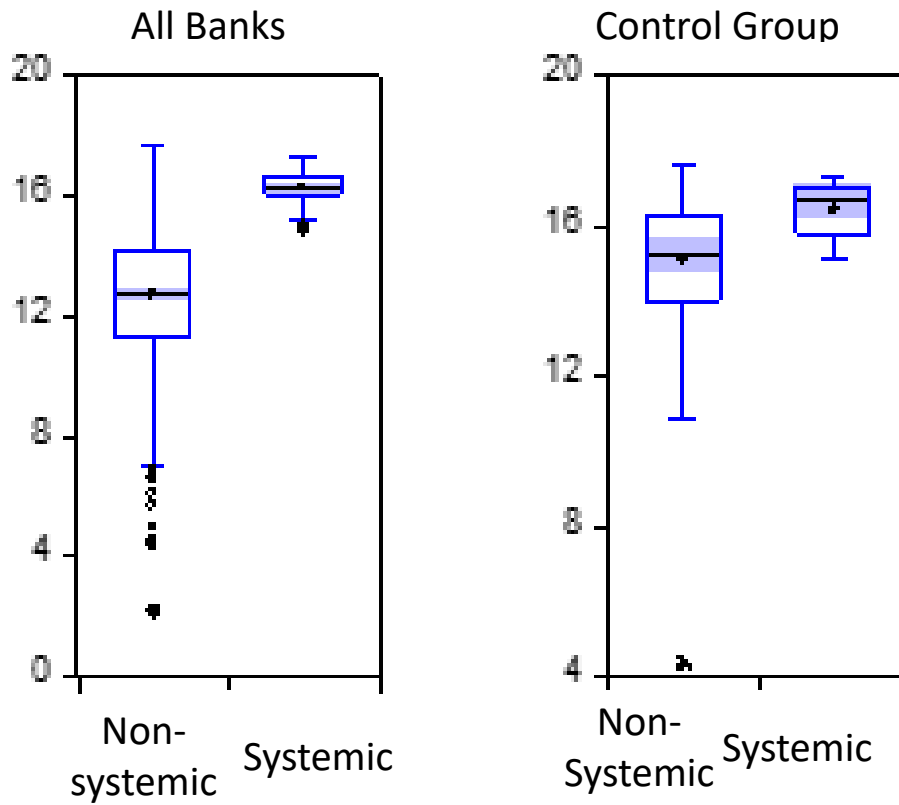
c. Risk-Weighted assets over total assets



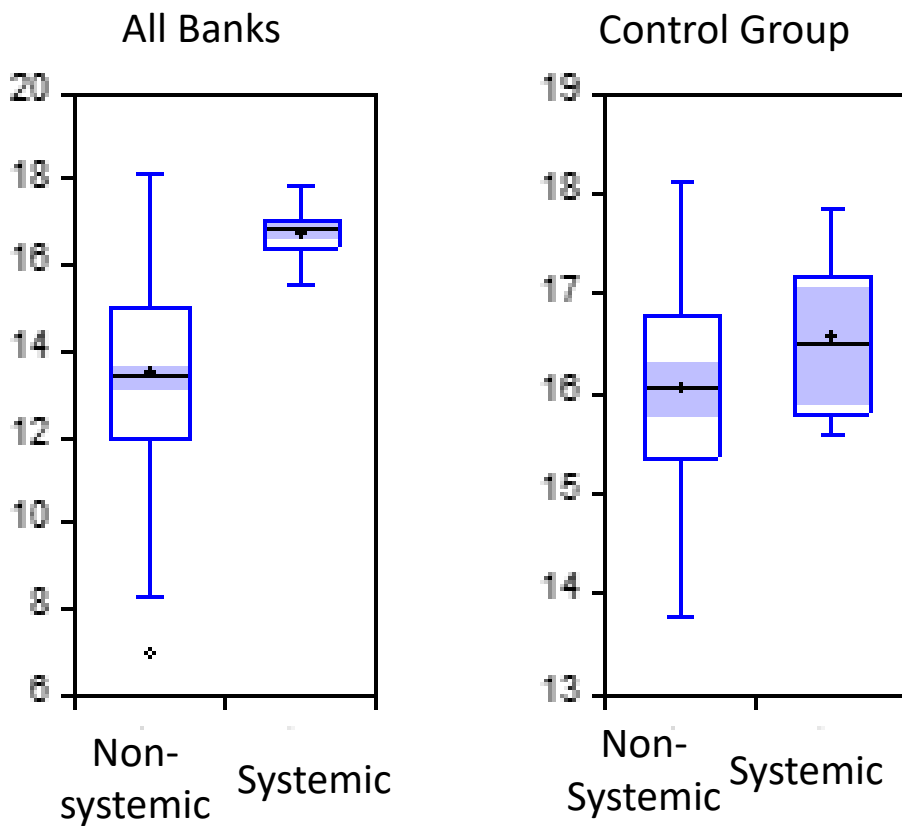
d. Log of Total assets



e. Log of Tier 2 capital to total assets



f. Log of hybrid instruments to total assets



We estimate equation (1) with a lagged dependent variable to correct for autocorrelation, making use of the Blundell-Bond's GMM estimator to correct for the possibility of a bias from using a lagged dependent in a panel set up. Furthermore, we employ random cross section effects, in line with the results of a Hausman test.

Regarding X_{it} , we have considered the following variables: First, the lagged equity to assets ratio. This is in line with the use in the literature that banks adjust their capital ratios sluggishly, as they use a mix of passive adjustment (through retained benefits) and active adjustment (through equity raising or changes in risk weight assets, be it through changes in the average risk weight or on assets).

Secondly, we use as a control banks profitability, proxied by the return on average assets (ROAA). The coefficient on this variable is uncertain. On one hand, higher profitability should lead to higher capital ratios, as retained earnings lead to passive increases in the capital ratios. On the other, more profitable banks have a lower probability of distress and higher taxable income. This will increase their incentives to use more debt, which should be relatively cheaper than capital.

Risk is captured by the ratio of risk weighted assets to total assets (RWAI/T), and in other specifications by the standard deviation of ROAA and the z-score. Generally, riskier banks should have higher capital ratios. This is because debt should be relatively more expensive for the riskier banks, and also because these banks will face higher capital requirements.

Thirdly, bank size will also determine the equity ratio through different channels. A priori, these channels point in different directions: on one hand, larger banks can diversify. This lowers the riskiness of their portfolio and so allows them to use less capital. On the other hand, larger banks are well known, and so may have access to larger pools of investors. As a result, they should have a lower cost of capital and so a larger equity ratio. We use the log of total assets (LASSETS) as a proxy for bank size.

Finally we introduce controls for the macro-economic context (GDP and CPI), which should also affect bank capital decisions.

We use different time dummy variables to test how the process of adjusting equity ratios changed during the different steps of regulation. While the first SIFI list was published in 2011, we focus on the 2013-2015 period. This is meant to capture how the regulatory changes that took part in 2013 (regarding the fiscal treatment of hybrid instruments) changed the way SIFIs built up capital. This way, we show the new regulations regarding TLAC, and the ease in issuing CoCo bonds from the changes in its tax treatment were used by systemic firms³.

The coefficients of interest are those associated with *Post*, *Treated* and the interaction term. These coefficients will indicate whether systemic institutions, had a certain bias in the way they determined their equity ratio of the different types of capital: We use two separate dates, to check the effect of different regulatory initiatives. First, 2011, after the first list of GSIFIs was made public, and, second, 2014. The latter reflects the legal changes to which CoCo bonds were subject in many jurisdictions, which equated their tax treatment and equated them to debt, thus increasing their use.

4.3. Empirical results

Results on the determination of bank capital

The main results are shown in Tables 3 and 4. Table 3 reports the results of the regression when the control group is determined by the results of the probit model. Table 4 presents the results when the control group is composed of the banks that had the highest support rating by Fitch. We find that the systemic regulation did not induce higher ETA ratios. In fact, some specifications suggest that the systemic regulation led to a lowering of ETA ratio. However, overall solvency ratios may have increased by the reduction in RWA intensity. This

³ We also run robustness checks using a dummy variable from 2011 onward. These additional results are not shown here to save space, but they are available from the authors upon request.

Table 3: Regression results using the nearest neighbor criteria for determining the counterfactual

	ETA	LASSETS	LT2	LT1	LT2 Hybrid	AT1
LAGGED DEP	0.87 ***	0.95 ***	0.93 ***	0.80 ***	0.94 ***	0.94 ***
ROAA	0.31 ***	0.03 ***	0.03 ***	0.06 ***	0.02 ***	-0.01 ***
GDP	-0.33 ***	0.01 ***	0.14 ***	-0.02	0.12 ***	0.04 ***
CPI	-0.25 ***	0.015 ***	0.02 ***	-0.02 ***	0.02	0.02 ***
RWAIN	0.01 ***		0.00 ***	0.00 ***	0.00 ***	0.00 ***
Lassets	-0.01 ***		0.11 ***	0.19 ***	0.11 ***	0.01 ***
POST2013	0.22 **	-0.02 ***	-0.05	0.03	-0.08 **	0.00
SYSTEMIC	0.17	0.01 ***	-0.02	0.02	-0.03	-0.04
POST2013*SYSTEMIC	-0.39 **	-0.12 ***	0.18 ***	-0.03	0.16 *	0.20 ***
C	4.35	0.84 ***	-2.67 ***	-0.38	-2.59 ***	-0.56 ***
Number of observations	447	447	447	447	447	447
R squared	0.7	0.85	0.72	0.88	0.75	0.65
Bank RE	Yes	Yes	Yes	Yes	Yes	Yes
Method	GMM	GMM	GMM	GMM	GMM	GMM
Control group	PROBIT	PROBIT	PROBIT	PROBIT	PROBIT	PROBIT

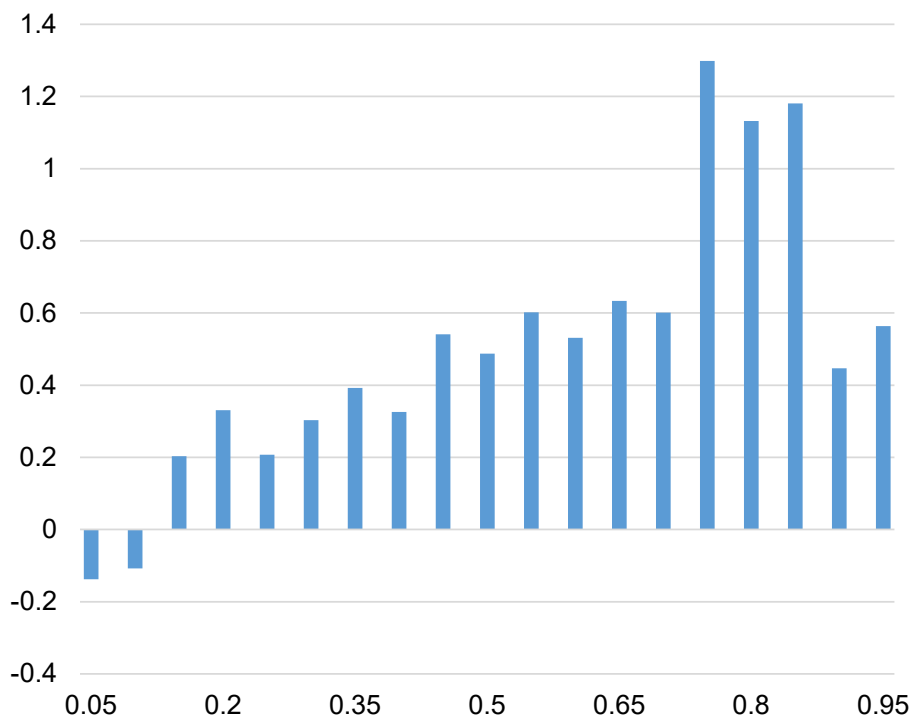
Note: LAGGED DEP is the lagged dependent variable. The different determinants are the levels of capital. ETA shows the equity to assets ratio, LT2 the log of Tier 2 capital, LT1 the log of Tier 1 capital, LT2 hybrid the use of Tier 2 hybrid instruments and AT1 the level of additional Tier 1 capital

Table 4: Regression results using the Fitch support rating criteria for determining the counterfactual

	ETA	LASSETS	LT2	LT1	LT2 Hybrid
LAGGED DEP	0.85 ***	0.97 ***	0.95 ***	0.999 ***	1.02 ***
ROAA	0.54 ***	0.09 ***	0.13 ***	0.16 ***	0.16 ***
GDP	-0.85 **	-0.03 ***	-0.08	-0.05	-0.06
CPI	-0.3 ***	0.007 ***	-0.03	-0.03 ***	0 ***
RWAINT	0.01 ***	0.001 ***	0 ***	0.01 ***	0.005 *
Lassets	0.06 ***		0.19 ***	0.36 ***	-0.1
POST2013	0.08 ***	0.0001 ***	-0.23 ***	-0.06 ***	-0.2 **
SYSTEMIC	0.1 ***	0.011 ***	-0.08	-0.09 **	-0.23
POST2011*SYSTEMIC	-0.46 ***	-0.022 ***	0.44 ***	0.06	0.388 **
C	10.14	0.84	1.67	0.66	
Number of observations	280	280	280	280	155
R squared	0.7	0.85	0.74	0.88	0.65
Bank FE					
Method	GMM	GMM	GMM	GMM	GMM
Control group	FITCHSUPPORT1	FITCHSUPPORT1	FITCHSUPPORT1	FITCHSUPPORT1	FITCHSUPPORT1

Note: LAGGED DEP is the lagged dependent variable. The different determinants are the levels of capital. ETA shows the equity to assets ratio, LT2 the log of Tier 2 capital, LT1 the log of Tier 1 capital, LT2 hybrid the use of Tier 2 hybrid instruments and AT1 the level of additional Tier 1 capital. The sample here is the systemic institutions and those institutions that, before 2011, had the largest support rating by Fitch.

Figure 2: Quantile regression results



The chart above shows the coefficient of the systemic*post2013 interaction term for different quantiles of the dependent variable

finding is robust to the use of different control groups (i.e. by government support in 2011, by the probit result or by size). The similarity in findings for both groups can be found for the main results.

Secondly, systemic banks were more likely to increase the use of lower level capital. This includes T2 capital, hybrids and AT1 capital. This result is consistent with our hypothesis that systemic banks had a comparative advantage on these levels of capital and that they used it to boost their ratio.

The latter effect is found when we run the exercise setting the treatment period to start in 2011⁴, but becomes particularly strong for the period after 2013, consistent with the effect of the regulatory change mentioned before, which equated AT1 issuance to debt issuance for banks in the European Union. This finding is consistent with that of Schepens (2016), which suggests that firms adjust their financial structure in reaction to the tax treatment of

⁴ These additional results are not shown here to save space, but they are- available from the authors upon request.

the different instruments.

In order to gain more insight on the bank characteristics that lead to differences in the composition of capital, we use quantile regressions to test which banks were more strongly affected by the regulation. While standard linear regression techniques summarize the average relationship between a set of regressors and the outcome variable based on the conditional mean function $E(y/x)$, quantile regressions allow to describe the relationship at different points in the conditional distribution of y . In particular, the quantile regressions show whether the reaction to the regulation was different for different levels of lower level capital. Figure 2 shows the results of the same regression as (1) for different quantiles of the dependent variable (AT1). As can be seen, the effects of the regulatory changes were strongest in those banks that already had a high AT1 level. This result further suggests that the new regulation exacerbated the ex-ante differences across banks in the quality of capital.

Finally, we find evidence that systemic banks

were more likely to decrease assets in the period analyze, which served as another means to boost capital ratios.

Results regarding risk-taking decisions

The essential question that remains is what the effect of these changes was on bank risk. On one hand, higher AT1 issuance should lead to greater asset volatility (Berg and Kaserer, 2015) and induce bank weakness in times of stress. On the other, the decline in RWA intensity would suggest that bank risk declined.

We obtain some evidence that this has increased the risk of banks, as shown in Table 5. Risk factors like the SD of ROAA seem were negatively affected by the regulatory change. However, we find no increase of a worsening in the z score, defined as the ratio of profitability (measured as the Return On Average Assets, ROAA) over the standard deviation of ROAA for systemic institutions. As a result, overall, we find an inconclusive effect on bank risk. Systemic regulation may not have been effective in reducing bank risk.

However, this result is likely to depend on the level of ex ante capital at these institutions. We now test, with the same framework, how the results change when we consider the level of capital of institutions in the beginning of the period, by introducing a normalized ETA ratio (ET) as an interaction term. This is shown in Table 5 by the last term, which shows the interaction of the post 2013 dummy, the systemic banks dummy and ET, which shows the equity to assets ratio in 2013.

We find that higher capitalized used less AT1. This suggests that the drive to higher capital perpetuated the *ex-ante* differences in banks safety. The coefficient on AT1 is always at about 0.5, showing that systemic banks were more prone to use AT1. AT1 is defined as a ratio on total assets. We find low capitalized systemic banks were even more likely to use lower level capital (AT1, T2).

The reduction of RWA density was particularly important for lower capitalized institutions, as shown in Table 5. This suggests that these in-

stitutions tried to boost their capital ratios this way. This is not consistent with the increase in the standard deviation of ROAA, pointing to greater risk being taken on, in spite of the lower RWA intensity at the lower capitalized firms.

We also find evidence that they reduced assets, and this was particularly true of the lower capitalized banks, consistent with lower capitalized banks being stingier with credit, and with the higher use of CoCo bonds.

This is only true for the lower capitalized banks, which do show a decrease in their z score. It suggests a decline in RWA intensity was not a genuine decline in the risk of their portfolio.

Our results suggest that recent regulatory changes, combined with prevailing market access by these institutions has led to a sharp increase in the risk profile of their capital base, in particular for those banks that started off in a relatively weak capital position. Indeed the result of the tightening in regulation was an increase in bank risk for the lower capitalized institution.

Comparison with previous results in the literature

The results are broadly in line with the literature. For instance, in terms of deleveraging without reducing assets for the whole sample are consistent with those of De Jonghe 2015. Our findings also suggest there are lags in the correction of ETA ratios (consistent also with De Jonghe, 2015) and that these depend on both macroeconomic and bank specific characteristics. That lowly capitalized institutions react differently to deleveraging has been documented by Schepens (2016), and is confirmed by our results.

Less capitalized firms used lower level capital when asked to increase their capital ratios. This is consistent with these firms facing a higher cost of capital. It is consistent with Schepens (2016) finding that lower capitalized firms have a tendency to increase risk, as they are more prone to use debt. We add to those

Table 5. Additional regression results using the Fitch support rating criteria for determining the counterfactual

	RWAIN	LASSETS	AT1	SDROAA	ZSCORE	LT2
LAGGED DEP	0.95 ***	0.98 ***	0.9 ***	0.77 ***	0.08 ***	0.76 ***
ROAA		0.02 ***	-0.0009 ***	0	-0.39 ***	-0.07 *
GDP	-0.23 ***	-0.01 ***	0.14 ***	-0.19 ***	-1.76 ***	-0.55 *
CPI	-0.38 ***	0.015 ***	0.04 ***	0.021	-0.88 ***	-0.03
RWAIN					-0.07 ***	
Lassets	0.04 ***			-0.03 ***	***	0.18 ***
POST2013	0.39 ***	-0.02 ***	0.08 ***	-0.11	-1.848 ***	-0.23 ***
SYSTEMIC	0.36 ***	0.01 ***	0.007	0.12	-0.044	-0.02
POST2013*SYSTEMIC	-1.06 ***	-0.02 ***	0.47 ***	0.12 ***	0.05	0.52 ***
POST2013*SYSTEMIC*ETI	0.2 ***	0.2 ***	-0.04 ***	0.011	0.15 ***	-0.1 ***
C	4.27 ***	0.84 ***	-1.59 ***	0.66	19.6	5.79 **
Number of observations	525	525	525	525	525	525
R squared	0.7	0.85	0.74	0.88	0.65	0.65
Method	GMM	GMM	GMM	GMM	GMM	GMM
Control group	FITCHSUPPORT1	FITCHSUPPORT1	FITCHSUPPORT1	FITCHSUPPORT1	FITCHSUPPORT1	FITCHSUPPORT1

Note: LAGGED DEP is the lagged dependent variable. The different determinants are the levels of capital. ETA shows the equity to assets ratio, LT2 the log of Tier 2 capital, LT1 the log of Tier 1 capital, LT2 hybrid the use of Tier 2 hybrid instruments and AT1 the level of additional Tier 1 capital. The sample here is the systemic institutions and those institutions that, before 2011, had the largest support rating by Fitch.

findings, by showing that not only are they prone to issue more debt, but rather, they also use lower level capital, which adds more risk to their financial structure in times of stress.

In line with the literature, lower capitalized firms are found to be more prone to reduce lending when asked for higher capital requirements. They decreased the RWA intensity (more so than all systemic institutions, which did that too), however, the higher capital also led to lower z-score.

5. Concluding remarks

The drive to build up stricter capital requirements after the crisis should have positive effects. These requirements build up the buffers available to banks, lowering the risk of default. However, when dealing with systemic institutions, there is a substantial gap in terms of how these institutions react to more stringent capital requirements.

Some of the perverse effects identified in the literature become particularly acute at these institutions. In particular, we provide evidence that they are prone to using lower level capital, consistent with pecking order theory and ROE targeting by firms.

As a result, bank weakness may actually have been enhanced by the new regulation. Further research is needed to understand the systemic effects of lower level capital. Their pricing, and in particular the spillovers to equity pricing can bring further difficulties. In addition, since most hybrid holders are banks themselves, the effects on financial stability can be worsened.

In this context, a further avenue for research involves the effects of capital requirements. Tight capital requirements, like for instance basing the requirements only on CET1 can bring the advantage that the destabilizing effects are avoided. However, if the effect that dominates is the ROE stabilization, then this effect may be counterproductive. From a welfare perspective, it should be important to understand which of the effects dominates.

The premium is then on regulators. Debt like capital has certain benefits for financial stability over CET1, but the fact is that their design has been bad for welfare and it seems to have been used by riskier firms. The latter need not be bad. However, firms that are badly capitalized should not use lower level capital, compensating it with more risk. In order to achieve this, a combination of larger buffers for riskier firms, more transparency regarding the key elements of capital, and strict regulation on the design and the magnitude of CoCo bonds would be a solution.

The results presented in this paper should be of value to macro-prudential and monetary policymakers.

References

Acharya, V. V., Anginer, D., Warburton, A. J., 2016. The end of market discipline? Investor expectations of implicit state guarantees. Available at SSRN: <https://ssrn.com/abstract=1961656> or <http://dx.doi.org/10.2139/ssrn.1961656>

Admati, A., Hellwig, M., 2014. *The bankers' new clothes: What's wrong with banking and what to do about it*. Princeton University Press, Princeton.

Avdjiev, S., Kartasheva, A., Bogdanova, B., 2013. CoCos: A primer. *BIS Quarterly Review* September, 43-56.

Berger, A. N., Bouwman, C. H., 2013. How does capital affect bank performance during financial crises? *Journal of Financial Economics* 109, 146-176.

Berger, A. N., Bouwman, C. H., Kick, T., Schaeck, K., 2016. Bank liquidity creation following regulatory interventions and capital support. *Journal of Financial Intermediation* 26, 115-141.

Berg, T., Kaserer, C., 2015. Does contingent capital induce excessive risk-taking? *Journal of Financial Intermediation* 24, 356-385.

Black, L. K., Hazelwood, L. N., 2013. The effect of TARP on bank risk-taking. *Journal of Financial Stability* 9, 790-803.

Blundell, R. Bond, S., 1998, Initial conditions and moment restrictions in dynamic panel data models. *Journal of Econometrics* 87, 115-143.

Brunnermeier, M. K., Pedersen, L. H., 2009. Market liquidity and funding liquidity. *Review of Financial Studies* 22, 2201-2238.

Brunnermeier, M. K., Garicano, L., Lane, P.R., Pagano, M., Reis, R., Santos, T., Thesmar, D., Van Nieuwerburgh, S., Vayanos, D., 2011. European safe bonds (ESBies) www.euro-nomics.com.

Calderon, C., Schaeck, K., 2016. The effects of government interventions in the financial sector on banking competition and the evolution of zombie banks. *Journal of Financial and Quantitative Analysis* 51, 1391-1436.

Calomiris, C. W., Herring, R. J., 2012. Why and how to design a contingent convertible debt requirement, in: Fuchita, Y., Herring, R. J., Litan, R. E. (Eds.), *Rocky Times: New Perspectives on Financial Stability*, Brookings/NICMR Press, Washington, pp. 117-162.

Chan, S., van Wijnbergen, S., 2016. Coco design, risk shifting and financial fragility. Discussion Paper 11099, Centre for Economic Policy Research, London.

Chance, C., 2016. EU regulatory developments. *Law and Financial Markets Review* 10, 56-63.

Coffee, J. C., 2011. Systemic risk after Dodd-Frank: Contingent capital and the need for regulatory strategies beyond oversight. *Columbia Law Review* 111, 795-847.

De Jonghe, O., Öztekin, Ö., 2015. Bank capital management: International evidence. *Journal of Financial Intermediation* 24, 154-177.

DeAngelo, H., Stulz, R. M., 2013. Why high leverage is optimal for banks. Working Paper 19139. National Bureau of Economic Research, Cambridge, MA.

Demirguc-Kunt, A., Detragiache, E., Merrouche, O., 2013. Bank capital: Lessons from the financial crisis. *Journal of Money, Credit and Banking* 45, 1147-1164.

Duchin, R., Sosyura, D., 2014. Safer ratios, riskier portfolios: Banks' response to government aid. *Journal of Financial Economics* 113, 1-28.

Flannery, M. J., 2010. Stabilizing large financial institutions with contingent capital certificates. Research Paper 04/10, Centre for Applied Research in Finance, Milano.

Flannery, M. J., Rangan, K. P., 2008. What caused the bank capital build-up of the 1990s? *Review of Finance* 12, 391-429.

Giannetti, M., Simonov, A., 2013. On the real effects of bank bailouts: Micro evidence from Japan. *American Economic Journal: Macroeconomics* 5, 135-167.

Greenlaw, D., Hatzius, J., Kashyap, A. K., Shin, H. S., 2008. Leveraged losses: Lessons from the mortgage market meltdown, in: *Proceedings of the US monetary policy forum, University of Chicago Booth School of Business, Chicago, IL*, pp. 7-59.

Gropp, R., Heider, F., 2010. The determinants of bank capital structure. *Review of Finance* 14, 587-622.

Haldane, A. G., 2013. Rethinking the financial network. in: Jansen, S. A., Schröter, E., Stehr, N. (Eds.), *Fragile Stabilität – stabile Fragilität*, Springer VS, Berlin, pp 243-278.

Haldane, A. G., Madouros, V., 2012. The dog and the frisbee. *Revista de Economía Institucional* 14, 13-56.

Hannoun, H., 2010. The Basel III capital framework: A decisive breakthrough. *Bank for International Settlements*, Basel.

Horváth, R., Seidler, J., Weill, L., 2014. Bank capital and liquidity creation: Granger-causality evidence. *Journal of Financial Services Research* 45, 341-361.

International Monetary Fund, 2009. *Global Financial Stability Report*, Chapter 3, available at <http://www.imf.org/external/pubs/ft/gfsr/2009/01/pdf/chap3.pdf>.

Kashkari, N., 2016. Lessons from the crisis: Ending too big to fail. Remarks at the Brookings Institution, Washington, DC. Available at <https://www.minneapolisfed.org/news-and-events/presidents-speeches/lessons-from-the-crisis-ending-too-big-to-fail>

Laeven, L., Levine, R., 2009. Bank governance, regulation and risk taking. *Journal of Financial Economics* 93, 259-275.

Marcus, A. J., 1984. Deregulation and bank financial policy. *Journal of Banking and Finance* 8, 557-565.

Myers S., 1984. The capital structure puzzle, *Journal of Finance* 39, 575-592.

Myers S., Majluf, N., 1984. Corporate financing and investment decisions when firms have information that investors do not have. *Journal of Financial Economics* 13, 187-221.

Pagratis, S., Karakatsani, E., Louri, H., 2014. Bank leverage and return on equity targeting: Intrinsic procyclicality of short-term choices. Working Paper 189, Bank of Greece, Athens.

Reichlin, L., 2014. Monetary policy and banks in the euro area: The tale of two crises *Journal of Macroeconomics* 39, 387–400.

Rosenbaum, P. R., Rubin, D. B., 1985. Constructing a control group using multivariate matched sampling methods that incorporate the propensity score. *The American Statistician* 39, 33-38.

Schaeck, K., Cihak, M., Maechler, A., Stolz, S., 2011. Who disciplines bank managers? *Review of Finance* 16, 197-243.

Schepens, G., 2016. Taxes and bank capital structure. *Journal of Financial Economics* 120, 585-600.

Singh, S. K., Gómez-Puig, M., Sosvilla-Rivero, S., 2016. Sovereign-bank linkages: Quantifying directional intensity of risk transfers in EMU countries. *Journal of International Money and Finance* 63, 137-164.

Appendix: list of GSIFI banks and control group

<u>G-sifis in 2013</u>	<u>Control Group</u>
Banco Santander, SA	Aareal Bank AG
Barclays Plc	Banco Bilbao Vizcaya Argentaria, SA
BNP Paribas SA	Bankia, SA
Crédit Agricole SA	CaixaBank, SA
Credit Suisse Group AG	Commerzbank AG
Deutsche Bank AG	Crédit Industriel et Commercial
Groupe BPCE	Danske Bank A/S
ING Groep N.V.	Deutsche Pfandbriefbank AG
Nordea Bank AB (publ)	Dexia SA
Royal Bank of Scotland Group Plc	Erste Group Bank AG
Société Générale SA	FinecoBank SpA
Standard Chartered Plc	HSBC Trinkaus & Burkhardt AG
UBS Group AG	KBC Group NV
UniCredit SpA	Lloyds Banking Group Plc
	Nationwide Building Society
	Natixis SA
	Raiffeisen Bank International AG
	Svenska Handelsbanken AB (publ)
	Svenska Handelsbanken AB (publ)
	Swedbank AB (publ)
	Všeobecná úverová banka, a.s.
	Všeobecná úverová banka, a.s.
	Credit Mutuel
	Intesa San Paolo
	Rabobank Group
	DZ Bank
	KfW Group
	ABN AMRO Group NV

Últimos títulos publicados

WORKING PAPERS

WP05/17 Álvarez, Ignacio; Uxó, Jorge. y Febrero Eladio.: *Internal devaluation in a wage-led economy. The case of Spain.*

WP04/17 Albis, Nadia y Álvarez Isabel.: *Estimating technological spillover effects in presence of knowledge heterogeneous foreign subsidiaries: Evidence from Colombia.*

WP03/17 Echevarria-Icazaa, Victor. y Sosvilla-Rivero, Simón: *Yields on sovereign debt, fragmentation and monetary policy transmission in the euro area: A GVAR approach.*

WP02/17 Morales-Zumaquero, Amalia.; Sosvilla-Rivero, Simón.: *Volatility spillovers between foreign-exchange and stock markets.*

WP01/17 Alonso, Miren.: *I open a bank account, you pay your mortgage, he/she gets a credit card, we buy health insurance, you invest safely, they... enjoy a bailout. A critical analysis of financial education in Spain.*

WP04/16 Fernández-Rodríguez Fernando y Sosvilla Rivero, Simón: *Volatility transmission between stock and exchange-rate markets: A connectedness analysis.*

WP03/16 García Sánchez, Antonio; Molero, José; Rama, Ruth: *Patterns of local R&D cooperation of foreign subsidiaries in an intermediate country: innovative and structural factors.*

WP02/16 Gómez-Puig, Marta; Sosvilla-Rivero, Simón: *Debt-growth linkages in EMU across countries and time horizon.*

WP01/16 Rodríguez, Carlos; Ramos, Javier: *El sistema español de Garantía Juvenil y Formación Profesional Dual en el contexto de la Estrategia Europea de Empleo.*

Desempleo Juvenil en España. Vol 2. Ruiz-Gálvez Juzgado, María Eugenia; Rodríguez Crespo, Carlos.

Desempleo Juvenil en España. Vol 1. Ramos, Javier; Vicent Valverde, Lucía; Recuenco-Vegas, Luis: *Desempleo Juvenil en España.*

WP05/15 Pérez Pineda, Jorge Antonio; Alañón Pardo, Ángel: *Mediciones alternativas de la cooperación internacional para el desarrollo en el contexto de la agenda post 2015.*

WP04/15 Fernández-Rodríguez, Fernando; Gómez-Puig, Marta; Sosvilla-Rivero, Simón: *Volatility spillovers in EMU sovereign bond markets.*

WP03/15 Stupariu, Patricia; Ruiz, Juan Rafael; Vilariño, Angel: *Reformas regulatorias y crisis de los modelos VaR.*

WP02/15 Sosvilla, Simón; Ramos, María del Carmen: *De facto exchange-rate regimes in Central and Eastern European Countries*

WP01/15 Fernández, Fernando; Gómez, Marta; Sosvilla, Simón: *Financial stress transmission in EMU sovereign bond market volatility: A connectedness analysis.*

WP08/14 Albis, Nadia; Álvarez, Isabel: *Desempeño innovador de las subsidiarias de empresas multinacionales en la industria manufacturera de Colombia*

WP07/14 Pérez, Luis; Hernández, Julio; Berumen, Sergio: *La motivación extrínseca del profesorado universitario en Alemania y en España: un análisis empírico.*

- WP06/14** Donoso, Vicente; Martín, Víctor; Minondo, Asier: *Exposure to Chinese imports and local labor market outcomes. An Analysis for Spanish provinces*
- WP05/14** Donoso, Vicente; Martín, Víctor; Minondo, Asier: *Import competition from China and an employment. An analysis using Spanish workers' micro-data.*
- WP04/14** Stupariu, Patricia; Vilariño, Ángel: *Retos y carencias de la regulación financiera internacional.*
- WP03/14** García, Antonio; Molero, José; Rama, Ruth: *Foreign MNEs and domestic innovative capabilities: are there conditions for reverse spillovers in the Spanish industry*
- WP 02/14** Sosvilla Rivero, Simón; Ramos Herrera, María del Carmen: *On the forecast accuracy and consistency of exchange rate expectations: The Spanish PwC Survey*
- WP01/14** Kropacheva, Anna; Molero, José: *Russian technological specialization in terms of world's innovation changes during 1994-2008. Comparison with countries of BRIC and European Innovation-driven economies.*
- WP 07/13** Sanchís, Raúl G.: *Extended theory about the allocation of the time. Description and application to the increase in the retirement age policies.*
- WP 06/13** Morales-Zumaquero, Amalia; Sosvilla-Rivero, Simón: *Real exchange rate volatility, financial crises and nominal exchange regimes.*
- WP 05/13** Álvarez, Isabel; Labra, Romilio: *Identifying the role of natural resources in knowledge-based strategies of development.*
- WP 04/13** Alonso Gallo, Nuria; Trillo del Pozo, David: *La respuesta de la regulación prudencial a la 29 crisis: Basilea II.*
- WP 05/13** Sosvilla-Rivero, Simón; Ramos-Herrera, María del Carmen: *On the forecast and consistency of exchange rate expectations: The Spanish PwC Survey.*
- WP 04/12** Sosvilla-Rivero, Simón; Morales-Zumaquero, Amalia: *Real exchange rate volatility, financial crises and nominal exchange regimes.*
- WP 03/13** Revuelta, Julio; Alonso, Fernando: *Presencia de las multilatinas en Europa. Tipología y estrategia empresarial.*
- WP 02/13** Nicolau Ibarra, Ignacio: *Evolución de la cooperación española en El Salvador.*
- WP 01/13** Monedero, Juan Carlos; Jerez, Ariel; Ramos, Alfredo; Fernández, Jose Luis: *Participación ciudadana y Democracia. Una revisión de las mejores experiencias Iberoamericanas.*
- WP 05/12** Sanchís, Raúl G.: *Trying to escape the Malaise State in the future. A macroeconomic design to hinder another Great Recession which risks the Welfare State.*
- WP 04/12** Basave Kunhardt, J., *Flujos de IED mexicana hacia Europa y presencia de grandes multinacionales mexicanas en España. Evidencia empírica y reflexiones teóricas.*
- WP 03/12** Luengo Escalonilla, F., Gracia Santos, M., Vicent Valverde, L., *Productividad y Posicionamiento Estructural en la industria de bienes de equipo española.*
- WP 02/12** Alonso (dir.), José A.; Castillo, Alberto; García, Héctor; Ospina, Shirley; Aguirre, Pablo; Millán, Natalia; Santander, Guillermo: *Estimación de la ayuda española a la infancia: una propuesta metodológica.*
- WP 01/12** Alonso (dir.), José A.; Aguirre, Pablo; Castillo, Alberto: *La cooperación al desarrollo y la infancia. Apuntes estratégicos para el caso de España.*

- WP 09/11** Torrecillas, Celia; Fischer, Bruno B.: *Technological Attraction of FDI flows in Knowledge-Intensive Services: a Regional Innovation System Perspective for Spain.*
- WP 08/11** Gómez-Puig, Marta; Sosvilla-Rivero, Simón: *Causality and contagion in peripheral emu public debt markets: a dynamic approach.*
- WP 07/11** Sosvilla-Rivero, Simón; Ramos-Herrera, María del Carmen: *The US Dollar-Euro exchange rate and US-EMU bond yield differentials: A Causality Analysis.*
- WP 06/11** Sosvilla-Rivero, Simón; Morales-Zumaquero, Amalia: *Volatility in EMU sovereign bond yields: Permanent and transitory components.*
- WP 05/11** Castellacci, Fulvio; Natera, José Miguel: *A new panel dataset for cross-country analyses of national systems, growth and development (CANA).*
- WP 04/11** Álvarez, Isabel; Marín, Raquel; Santos-Arteaga, Francisco J.: *FDI entry modes, development and technological spillovers.*
- WP 03/11** Luengo Escalonilla, Fernando: *Industria de bienes de equipo: Inserción comercial y cambio estructural.*
- WP 02/11** Álvarez Peralta, Ignacio; Luengo Escalonilla, Fernando: *Competitividad y costes laborales en la UE: más allá de las apariencias.*
- WP 01/11** Fischer, Bruno B; Molero, José: *Towards a Taxonomy of Firms Engaged in International R&D Cooperation Programs: The Case of Spain in Eureka.*
- WP 09/10** Éltető, Andrea: *Foreign direct investment in Central and East European Countries and Spain – a short overview.*
- WP 08/10** Alonso, José Antonio; Garcimartín, Carlos: *El impacto de la ayuda internacional en la calidad de las instituciones.*
- WP 07/10** Vázquez, Guillermo: *Convergencia real en Centroamérica: evidencia empírica para el período 1990-2005.*
- WP 06/10** P. Jože; Kostevc, Damijan, Črt; Rojec, Matija: *Does a foreign subsidiary's network status affect its innovation activity? Evidence from post-socialist economies.*
- WP 05/10** Garcimartín, Carlos; Rivas Luis; García Martínez, Pilar: *On the role of relative prices and capital flows in balance-of-payments constrained growth: the experiences of Portugal and Spain in the euro area.*
- WP 04/10** Álvarez, Ignacio; Luengo, Fernando: *Financiarización, empleo y salario en la UE: el impacto de las nuevas estrategias empresariales.*
- WP 03/10** Sass, Magdolna: *Foreign direct investments and relocations in business services – what are the locational factors? The case of Hungary.*
- WP 02/10** Santos-Arteaga, Francisco J.: *Bank Runs Without Sunspots.*
- WP 01/10** Donoso, Vicente; Martín, Víctor: *La sostenibilidad del déficit exterior de España.*
- WP 14/09** Dobado, Rafael; García, Héctor: *Neither so low nor so short! Wages and heights in eighteenth and early nineteenth centuries colonial Hispanic America.*
- WP 13/09** Alonso, José Antonio: *Colonisation, formal and informal institutions, and development.*
- WP 12/09** Álvarez, Francisco: *Opportunity cost of CO2 emission reductions: developing vs. developed economies.*

- WP 11/09** J. André, Francisco: *Los Biocombustibles. El Estado de la cuestión.*
- WP 10/09** Luengo, Fernando: *Las deslocalizaciones internacionales. Una visión desde la economía crítica.*
- WP 09/09** Dobado, Rafael; Guerrero, David: *The Integration of Western Hemisphere Grain Markets in the Eighteenth Century: Early Progress and Decline of Globalization.*
- WP 08/09** Álvarez, Isabel; Marín, Raquel; Maldonado, Georgina: *Internal and external factors of competitiveness in the middle-income countries.*
- WP 07/09** Minondo, Asier: *Especialización productiva y crecimiento en los países de renta media.*
- WP 06/09** Martín, Víctor; Donoso, Vicente: *Selección de mercados prioritarios para los Países de Renta Media.*
- WP 05/09** Donoso, Vicente; Martín, Víctor: *Exportaciones y crecimiento económico: estudios empíricos.*
- WP 04/09** Minondo, Asier; Requena, Francisco: *¿Qué explica las diferencias en el crecimiento de las exportaciones entre los países de renta media?*
- WP 03/09** Alonso, José Antonio; Garcimartín, Carlos: *The Determinants of Institutional Quality. More on the Debate.*
- WP 02/09** Granda, Inés; Fonfría, Antonio: *Technology and economic inequality effects on international trade.*
- WP 01/09** Molero, José; Portela, Javier y Álvarez Isabel: *Innovative MNEs' Subsidiaries in different domestic environments.*
- WP 08/08** Boege, Volker; Brown, Anne; Clements, Kevin y Nolan Anna: *¿Qué es lo "fallido"? ¿Los Estados del Sur, o la investigación y las políticas de Occidente? Un estudio sobre órdenes políticos híbridos y los Estados emergentes.*
- WP 07/08** Medialdea García, Bibiana; Álvarez Peralta, Nacho: *Liberalización financiera internacional, inversores institucionales y gobierno corporativo de la empresa.*
- WP 06/08** Álvarez, Isabel; Marín, Raquel: *FDI and world heterogeneities: The role of absorptive capacities.*
- WP 05/08** Molero, José; García, Antonio: *Factors affecting innovation revisited.*
- WP 04/08** Tezanos Vázquez, Sergio: *The Spanish pattern of aid giving.*
- WP 03/08** Fernández, Esther; Pérez, Rafaela; Ruiz, Jesús: *Double Dividend in an Endogenous Growth Model with Pollution and Abatement.*
- WP 02/08** Álvarez, Francisco; Camiña, Ester: *Moral hazard and tradeable pollution emission permits.*
- WP 01/08** Cerdá Tena, Emilio; Quiroga Gómez, Sonia: *Cost-loss decision models with risk aversion.*
- WP 05/07** Palazuelos, Enrique; García, Clara: *La transición energética en China.*
- WP 04/07** Palazuelos, Enrique: *Dinámica macroeconómica de Estados Unidos: ¿Transición entre dos recesiones?*
- WP 03/07** Angulo, Gloria: *Opinión pública, participación ciudadana y política de cooperación en España.*
- WP 02/07** Luengo, Fernando; Álvarez, Ignacio: *Integración comercial y dinámica económica: España ante el reto de la ampliación.*
- WP 01/07** Álvarez, Isabel; Magaña, Gerardo: *ICT and Cross-Country Comparisons: A proposal of a new composite index.*

- WP 05/06** Schünemann, Julia: *Cooperación interregional e interregionalismo: una aproximación social-constructivista.*
- WP 04/06** Kruijt, Dirk: *América Latina. Democracia, pobreza y violencia: Viejos y nuevos actores.*
- WP 03/06** Donoso, Vicente; Martín, Víctor: *Exportaciones y crecimiento en España (1980-2004): Coin-tegración y simulación de Montecarlo.*
- WP 02/06** García Sánchez, Antonio; Molero, José: *Innovación en servicios en la UE: Una aproximación a la densidad de innovación y la importancia económica de los innovadores a partir de los datos agregados de la CIS3.*
- WP 01/06** Briscoe, Ivan: *Debt crises, political change and the state in the developing world.*
- WP 06/05** Palazuelos, Enrique: *Fases del crecimiento económico de los países de la Unión Europea–15.*
- WP 05/05** Leyra, Begoña: *Trabajo infantil femenino: Las niñas en las calles de la Ciudad de México.*
- WP 04/05** Álvarez, Isabel; Fonfría, Antonio; Marín Raquel: *The role of networking in the competi-tive-ness profile of Spanish firms.*
- WP 03/05** Kausch, Kristina; Barreñada, Isaías: *Alliance of Civilizations. International Security and Cos-mopolitan Democracy.*
- WP 02/05** Sastre, Luis: *An alternative model for the trade balance of countries with open economies: the Spanish case.*
- WP 01/05** Díaz de la Guardia, Carlos; Molero, José; Valadez, Patricia: *International competitiveness in services in some European countries: Basic facts and a preliminary attempt of interpreta-tion.*
- WP 03/04** Angulo, Gloria: *La opinión pública española y la ayuda al desarrollo.*
- WP 02/04** Freres, Christian; Mold, Andrew: *European Union trade policy and the poor. Towards im-proving the poverty impact of the GSP in Latin America.*
- WP 01/04** Álvarez, Isabel; Molero, José: *Technology and the generation of international knowledge spillovers. An application to Spanish manufacturing firms.*

OCCASIONAL PAPERS

- OP01/16** Borrell, Josep; Mella, José María; Melle, Mónica; Nieto, José Antonio. *“¿Es posible otra Euro-pa? Debate abierto.”*

POLICY PAPERS

- PP 01/15** De la Cruz, C.: *Cambio, Poder y Justicia de Género en la Agenda 2030: Reflexiones para no perdernos en el camino.*
- PP 01/14** Luego F; Vicent L.: *Encrucijadas de la moneda única. Algunas claves para una reflexión desde la periferia.*
- PP 01/11** Monedero J.C., *Democracia y Estado en América Latina: Por una imprudente reinención de la política.*
- PP 02/10** Alonso, José Antonio; Garcimartín, Carlos; Ruiz Huerta, Jesús; Díaz Sarralde, Santiago: *Strengthening the fiscal capacity of developing countries and supporting the international fight against tax evasion.*
- PP 02/10** Alonso, José Antonio; Garcimartín, Carlos; Ruiz Huerta, Jesús; Díaz Sarralde, Santiago: *Fortalecimiento de la capacidad fiscal de los países en desarrollo y apoyo a la lucha internacional contra la evasión fiscal.*

- PP 01/10 Molero, José: *Factores críticos de la innovación tecnológica en la economía española.*
- PP 03/09 Ferguson, Lucy: *Analysing the Gender Dimensions of Tourism as a Development Strategy.*
- PP 02/09 Carrasco Gallego, José Antonio: *La Ronda de Doha y los países de renta media.*
- PP 01/09 Rodríguez Blanco, Eugenia: *Género, Cultura y Desarrollo: Límites y oportunidades para el cambio cultural pro-igualdad de género en Mozambique.*
- PP 04/08 Tezanos, Sergio: *Políticas públicas de apoyo a la investigación para el desarrollo. Los casos de Canadá, Holanda y Reino Unido.*
- PP 03/08 Mattioli, Natalia *Including Disability into Development Cooperation. Analysis of Initiatives by National and International Donors.*
- PP 02/08 Elizondo, Luis: *Espacio para Respirar: El humanitarismo en Afganistán (2001-2008).*
- PP 01/08 Caramés Boada, Albert: *Desarme como vínculo entre seguridad y desarrollo. La reintegración comunitaria en los programas de Desarme, desmovilización y reintegración (DDR) de combatientes en Haití.*
- PP 03/07 Guimón, José: *Government strategies to attract R&D-intensive FDI.*
- PP 02/07 Czaplińska, Agata: *Building public support for development cooperation.*
- PP 01/07 Martínez, Ignacio: *La cooperación de las ONGD españolas en Perú: hacia una acción más estratégica.*
- PP 02/06 Ruiz Sandoval, Erika: *Latinoamericanos con destino a Europa: Migración, remesas y code-rollo como temas emergentes en la relación UE-AL.*
- PP 01/06 Freres, Christian; Sanahuja, José Antonio: *Hacia una nueva estrategia en las relaciones Unión Europea – América Latina.*
- PP 04/05 Manalo, Rosario; Reyes, Melanie: *The MDGs: Boon or bane for gender equality and women's rights?*
- PP 03/05 Fernández, Rafael: *Irlanda y Finlandia: dos modelos de especialización en tecnologías avanzadas.*
- PP 02/05 Alonso, José Antonio; Garcimartín, Carlos: *Apertura comercial y estrategia de desarrollo.*
- PP 01/05 Lorente, Maite: *Diálogos entre culturas: una reflexión sobre feminismo, género, desarrollo y mujeres indígenas kichwuas.*
- PP 02/04 Álvarez, Isabel: *La política europea de I+D: Situación actual y perspectivas.*
- PP 01/04 Alonso, José Antonio; Lozano, Liliana; Prialé, María Ángela: *La cooperación cultural española: Más allá de la promoción exterior.*

DOCUMENTOS DE TRABAJO “EL VALOR ECONÓMICO DEL ESPAÑOL”

- DT 16/11 Fernández Vítors, David: *El papel del español en las relaciones y foros internacionales: Los casos de la Unión Europea y las Naciones Unidas.*
- DT 15/11 Rupérez Javier: *El Español en las Relaciones Internacionales.*
- DT 14/10 Antonio Alonso, José; Gutiérrez, Rodolfo: *Lengua y emigración: España y el español en las migraciones internacionales.*
- DT 13/08 de Diego Álvarez, Dorotea; Rodrigues-Silveira, Rodrigo; Carrera Troyano Miguel: *Estrategias para el Desarrollo del Cluster de Enseñanza de Español en Salamanca.*

- DT 12/08** Quirós Romero, Cipriano: *Lengua e internacionalización: El papel de la lengua en la internacionalización de las operadoras de telecomunicaciones.*
- DT 11/08** Girón, Francisco Javier; Cañada, Agustín: *La contribución de la lengua española al PIB y al empleo: una aproximación macroeconómica.*
- DT 10/08** Jiménez, Juan Carlos; Narbona, Aranzazu: *El español en el comercio internacional.*
- DT 09/07** Carrera, Miguel; Ogonowski, Michał: *El valor económico del español: España ante el espejo de Polonia.*
- DT 08/07** Rojo, Guillermo: *El español en la red.*
- DT 07/07** Carrera, Miguel; Bonete, Rafael; Muñoz de Bustillo, Rafael: *El programa ERASMUS en el marco del valor económico de la Enseñanza del Español como Lengua Extranjera.*
- DT 06/07** Criado, María Jesús: *Inmigración y población latina en los Estados Unidos: un perfil socio-demográfico.*
- DT 05/07** Gutiérrez, Rodolfo: *Lengua, migraciones y mercado de trabajo.*
- DT 04/07** Quirós Romero, Cipriano; Crespo Galán, Jorge: *Sociedad de la Información y presencia del español en Internet.*
- DT 03/06** Moreno Fernández, Francisco; Otero Roth, Jaime: *Demografía de la lengua española.*
- DT 02/06** Alonso, José Antonio: *Naturaleza económica de la lengua.*
- DT 01/06** Jiménez, Juan Carlos: *La Economía de la lengua: una visión de conjunto.*

